

CEWELD SA 410NiMo

TYPE Solid SAW filler metal for thermal shock resistant overlay welding

ANWENDUNGEN SA 410NiMo is a stainless solid SAW welding wire of the 12% Cr, 4.5% Ni, 0.5% Mo type. 410NiMo is used for welding similar martensitic and martensitic-ferritic steels in different applications, such as hydro turbines. Water and steam turbine parts of the same kind, thermoshock and high heat resistant. 1.4313, 1.4002, (G)X5CrNi(Mo) 13 4, X6CrAl 13, Grade CA 6 NM.

EIGENSCHAFTEN Wire with high Chromium content for thermo shock resistance. Fused flux FL 880 or agglomerated flux FL 838 can be used.

KLASSIFIKATION

AWS	A 5.9: ER410NiMo
EN ISO	14343-A: S 13 4
W.Nr.	1.4351
F-nr	6
FM	5

GEEIGNET FÜR Thermo shock resistant alloy, high temperature resistant, good corrosion resistance

ZULASSUNGEN

SCHWEISSPOSITIONEN



TYPICAL CHEMICAL ANALYSIS OF THE FILLER METAL (%)

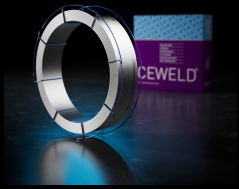
C	Si	Mn	P	S	Cr	Ni	Mo
0.02	0.5	0.6	0.02	0.01	12.5	4.8	0.5

MECHANISCHE GÜTEWERTE

Heat Treatment	R _{p0,2} (MPa)	R _m (MPa)	A ₅ (%)	Hardness
As Welded	>500	>760	>15	38 HRc

RÜCKTROCKNUNG Not required

GAS ACC. EN ISO 14175



CEWELD SA 410NiMo

SA 410NiMo 1,6MM

Packaging	KG/unit	EanCode
K-415	25	8720663412065