

# CEWELD E DUR 400 CrMo

**TYPE** Basic coated electrode for rebuilding heat resistant machine parts and buffer layers.( Fe 3, 400 HB CrMo)

**APPLICATIONS** CEWELD E DUR 400 CrMo is for Hardfacing, rebuilding, overlays, machine parts, wheels, conveyors, crossings, buffer layers prior to Hardfacing etc.

**PROPERTIES** CEWELD E DUR 400 CrMo is an exceptional easy to apply Eektrode without any risk for cracks and can also be applied on austenitic manganese steels, 40 HRc is usually almost obtained in the first layer. The weld deposit has a high impact resistance combined with abrasion resistance, including metal to metal friction resistance, and increased working temperatures up to 550°C.

**CLASSIFICATION** EN ISO 14700: E Fe3  
DIN 8555: E 3-UM-40-PT

**SUITABLE FOR** Rebuilding worn machine parts, Stone crushers, Hammers, Gears, Cams, rails, crossings etc.

**APPROVALS**

**WELDING POSITIONS**



**TYPICAL CHEMICAL ANALYSIS OF WELD METAL (%)**

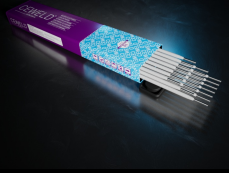
C	Mn	Cr	Mo	Fe	Si
0.1	0.6	6.5	3	Rem.	0.4

**MECHANICAL PROPERTIES**

Heat Treatment	R <sub>P0,2</sub> (MPa)	R <sub>m</sub> (MPa)	A <sub>5</sub> (%)	Hardness
As Welded				400 HB

**REDRYING** 300°C / 2 hr

**GAS ACC.** EN ISO 14175



# CEWELD E DUR 400 CrMo

E DUR 400 CRMO 2,5 X  
350MM

Packaging	KG/unit	EanCode
Can	3	8720663401601