



CEWELD ER 120 S-1 Tig

TYPE Extreme high tensile strength alloy with excellent impact properties for fine grain steels exceeding 890 MPa yield strength.

APPLICATIONS Welding materials such as S960QL – S1100Q and other similar fine grain cold tough steels. Offshore, crane building etc.

PROPERTIES Extreme high tensile strength alloy with very good mechanical properties and perfect welding characteristics. High impact strength at very low temperatures with exceptional plasticity of the weld deposit. Weldable with Co2 and Mix gas.

CLASSIFICATION

AWS	A 5.28: ER 120S-G
EN ISO	16834-A: W 89 5 I1 Mn4Ni2CrMo
F-nr	6
FM	2

SUITABLE FOR **Reh ≤ 960 MPa ISO 15608: ~3.1, 3.2 (Reh > 690 MPa)**
 1.8796, 1.8925, 1.8940, 1.8983, 1.8797, 1.8933, 1.8934, 1.8941, 1.8997
 S690Q-S890Q, S690QL-S890QL, S960Q, S960QL, S720MC
 ASTM A 709 Gr. 100 Type B, E, F, H, Q, HPS 100W
 N-A-XTRA M 700, PAS 700, alform 700 M, alform 900 x-treme, alform® 960 x-treme, Strenx 700-960, DILLIMAX 700-960

APPROVALS CE

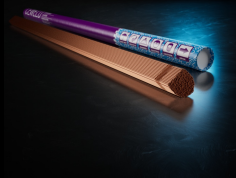
WELDING POSITIONS

TYPICAL CHEMICAL ANALYSIS OF THE FILLER METAL (%)	C	Si	Mn	Cr	Ni	Mo
	0.08	0.6	1.8	0.3	2.25	0.55

MECHANICAL PROPERTIES	Heat Treatment	R _{P0,2} (MPa)	R _m (MPa)	A ₅ (%)	Impact Energy (J) ISO-V	Hardness
					-60°C	
	As Welded	980	1090	18	50	HRc

REDRYING Not required

GAS ACC. EN ISO 14175 I1



CEWELD ER 120 S-1 Tig

ER 120 S-1 TIG 1,6 X
1000MM

Packaging	KG/unit	EanCode
Tube	5	8720663417237

ER 120 S-1 TIG 2,0 X
1000MM

Packaging	KG/unit	EanCode
Tube	5	8720663417244

ER 120 S-1 TIG 2,4 X
1000MM

Packaging	KG/unit	EanCode
Tube	5	8720663417268

ER 120 S-1 TIG 3,2 X
1000MM

Packaging	KG/unit	EanCode
Tube	5	8720663417275