

# CEWELD CuZn40G

**TYPE** Universal fluxcored brass brazing alloy with good mechanical strength

**APPLICATIONS** Brazing: Steels, Copper, Cast iron, Copper alloys, Nickel and for welding Brass and Bronze. This alloy is mainly used in the furniture and the bicycle industry for joining steels, also this alloy can be used for rebuilding Brass- ship propellers by flame welding.

**PROPRIÉTÉS** Easy to use brass alloy for brazing without separate flux, (flux cored rod) good mechanical properties and high corrosion resistance.  
Flux/Paste: CEWELD Universal-Flux

**CLASSIFICATION**

AWS	A 5.8: RBCuZn-A
EN ISO	17672: Cu 470
W.Nr.	2.0533
F-nr	106

**CONVIENT POUR** Brass, Copper, Steels, Manganese bronze, Nickel alloys, Cast iron etc..

**AGRÉMENTS**

**POSITIONS DE SOUDAGE**



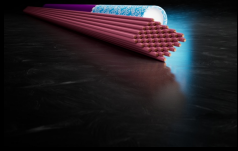
TYPICAL CHEMICAL ANALYSIS OF THE FILLER METAL (%)	Mn	Cu	Zn	Sn	Fe
	0.1	60	Rem.	0.35	0.25

PROPRIÉTÉS MÉCANIQUES	Heat Treatment	R <sub>P0,2</sub> (MPa)	R <sub>m</sub> (MPa)	A5 (%)	Hardness
	As Welded		350		88 HB

**ETUVAGE** Not required

**MELTING RANGE** 875 - 895°C

**GAS ACC. EN ISO 14175**



# CEWELD CuZn40G

CUZN40G 2,5 X 500MM

Packaging	KG/unit	EanCode
Tube	1	8720663421098