

CEWELD SA 316L

TYPE	Solid stainless steel welding wire for submerged arc welding	
TOEPASSINGEN	The alloy is widely used in the chemical and food-processing industries, as well as in shipbuilding, vessel and various types of architectural structure. Suitable for welding corrosion-resistant Cr-Ni-Mo steels with extremely low C-content at working temperatures up to 350°C.	
EIGENSCHAPPEN	SA 316L offers good general corrosion resistance, particularly to corrosion in acid and chlorinated environments. The alloy has a low carbon content which makes it particularly recommended when there is a risk of intergranular corrosion. can be used with our fused flux FL 880 or agglomerated fluxes FL 838 or FL 8111.	
CLASSIFICATIE	AWS	A 5.9: ER316L
	EN ISO	14343-A: S 19 12 3 L
	W.Nr.	1.4430
	F-nr	6
	FM	5
GESCHIKT VOOR	1.4583, 1.4435, 1.4436, 1.4404, 1.4406, 1.4408, 1.4401, 1.4571, 1.4580, 1.4406, 4.4430 X102CrNiMoNb 18 12, X2CrNiMo 18 14 3 (TP), X4CrNiMo 17 13 3, X2CrNiMo 17 12 2 (TP), X 5CrNiMo 19 11 2, X4CrNiMo 17 12 2 (TP), X6CrNiMo 17 12 2, X6CrNiMoNb 17 12 3, X2CrNiMoN 17 12 3 (TP) 316Cb, 316L, 316L, 316LN, 316H, 316, 316Ti, 316Cb, 316LN UNS S31640, UNS S31603, UNS S31653, UNS S31600, UNS S31635	

GOEDKEURINGEN CE

LASPOSITIES



TYPICAL CHEMICAL ANALYSIS OF THE FILLER METAL (%)

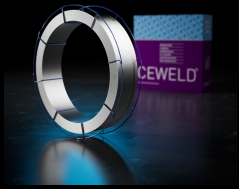
C	Si	Mn	P	S	Cr	Ni	Mo
0.02	0.5	2	0.02	0.02	19	12	2.5

MECHANISCHE WAARDEN

Heat Treatment	R _{p0,2} (MPa)	R _m (MPa)	A ₅ (%)	Impact Energy (J) ISO-V		Hardness
				RT	-196°C	
As Welded	370	550	35	120	55	HRc

HERDROGEN Not required

GAS ACC. EN ISO 14175



CEWELD SA 316L

SA 316L 2,4MM

Packaging	KG/unit	EanCode
K-415	25	8720663414281

SA 316L 3,2MM

Packaging	KG/unit	EanCode
K-415	25	8720663414298